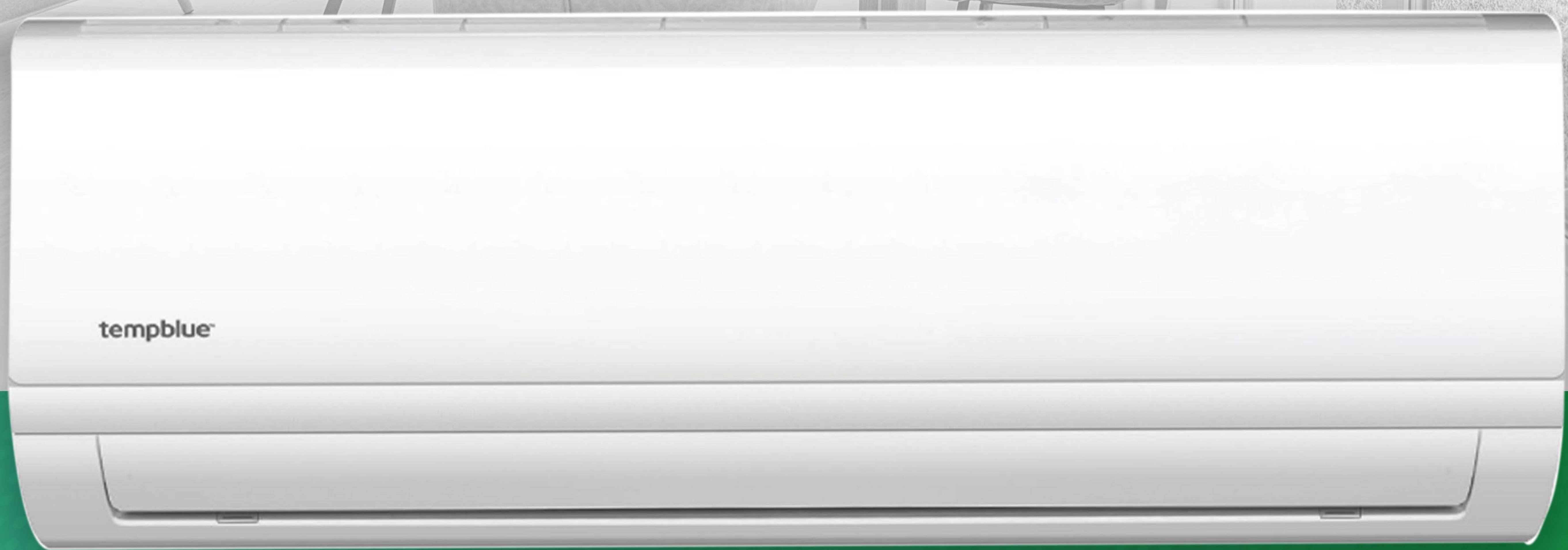


tempblue™

HIWALL J SERIES

FIXED SPEED



- **Two directional airflow**
- **Low refrigerant detection**
- **Left or right drain connection**
- **Louver position memory function**
- **Self diagnosis and auto protection**
- **Golden anti corrosion on indoor unit**
- **Interconnecting Cable**
- **Auto restart function**
- **Sleep mode**
- **Timer**
- **Piping Kit**
- **Auto swing**
- **Turbo Mode**



R-410A
REFRIGERANT

*indoor unit panel for 36K has a different appearance

Indoor Unit Model			TBH41J-012-H1N1C	TBH41J-009-H3N1C	TBH41J-012-H3N1C	TBH41J-018-H3N1C	TBH41J-024-H3N1C	TBH41J-036-H3N1C*
Outdoor Unit Model			TBG41J-012PH1N1C	TBG41J-009PH3N1C	TBG41J-012PH3N1C	TBG41J-018PH3N1C	TBG41J-024PH3N1C	TBG41J-036PH3N1C
Power supply		Ph-V-Hz	115V,1Ph,60Hz	220-230V,1Ph,60Hz	220-230V,1Ph,60Hz	220-230V,1Ph,60Hz	220-230V,1Ph,60Hz	220-230V,1Ph,60Hz
Cooling	Nominal Capacity	Btu/h	12000	12000	12000	18000	24000	30000
	Input	W	1075	1250	1250	1820	2500	3035
	Rated current	A	9.6	5.9	5.9	8.44	11.4	13.2
	EER	W/W	3	2.81	2.81	2.90	2.81	2.90
Max. input consumption		W	1750	1790	1790	2350	3000	4500
Max. current		A	17.5	9.2	9.2	12	15.5	25
Starting current		A	48	28	28	35.6	58	72
Compressor	Model		KSM106E2UDZK	ASM113N21UEZ	ASM113N21UEZ	PA155M2A-3ETL1	KSF230N1VKTB	KSG280N1VMT
	Type		ROTARY	ROTARY	ROTARY	ROTARY	ROTARY	ROTARY
	Brand		GMCC	GMCC	GMCC	GMCC	GMCC	GMCC
	Capacity	W	3300	3275/3310	3275/3310	5395/5430	8565/8650	10380/10445 ±3% W
	Input	W	1130	1130/1180 ±3%	1130/1180 ±3%	1255/1270	2020/2100	2380 ±3% W
	Rated current(RLA)	A	9.95	5.85/5.45 ±3%	5.85/5.45 ±3%	6.10/5.65	9.85/9.45	11.55 ±3% A
	Locked rotor Amp(LRA)	A	51	28 ±10%	28 ±10%	35.6	58±10%	at 1φ-240V-60Hz~ ±10% 72 A
	Thermal protector		UP3-27/HPA-544	HPA-522	HPA-522	HPA -732H	HPA-452	HPD-565H
	Thermal protector position		INTERNAL	INTERNAL	INTERNAL	INTERNAL	INTERNAL	/
	Capacitor	μF	70.0	45.0	45.0	50.0	55.0	60.0
Refrigerant oil/oil charge	ml	ESTER OIL VG68-300	ESTEL OIL VG68 -300±15	ESTEL OIL VG68 -300±15	ESTEL OIL VG74/290	VG74 410±15 ml	VG74 740 ±15 ml	
Indoor fan motor	Model		YKFG-15-4-28-1	YKFG-20-4-10L	YKFG-20-4-10L	YKFG-45-4-6-5	YKFG-45-4-13	ZKFP-58-8-1-10
	Input	W	46.0	47.4	47.4	58.5	89.0	58.0
	Capacitor	uF	3	1.5	1.5	1.5	3	/
	Speed(Hi/Mi/Lo)	r/min	1200/950/850	1150/950/850	1150/950/850	1180/1000/850	1200/1000/850	1210/1080/900
Indoor coil	a.Number of rows		2	2	2	2	2	2
	b.Tube pitch(a)x row pitch(b)	mm	21x13.37	19.5x11.6	19.5x11.6	21x13.37	21x13.37	21x13.37
	c.Fin spacing	mm	1.2	1.2	1.2	1.2	1.3	1.2
	d.Fin type (code)		Hydrophilic aluminum	Hydrophilic aluminum	Hydrophilic aluminum	Hydrophilic aluminum	Hydrophilic aluminum	Hydrophilic aluminum
	e.Tube outside dia.and type	mm	Φ7,Inner groove tube	Φ5,Inner groove tube	Φ5,Inner groove tube	Φ7,Inner groove tube	Φ7,Inner groove tube	Φ7,Inner groove tube
	f.Coil length x height x width	mm	598x84x13.37+598x105x26.74+598x105x26.74	595x78x23.2+595x117x23.2+595x78x23.2	595x78x23.2+595x117x23.2+595x78x23.2	750x189x26.74+750x105x26.74	780x210x26.74+780x105x26.74	965x189x26.74+965x84x26.74+945x147x26.74
	g.Number of circuits		3	4	4	3	4	5
Indoor air flow (Hi/Mi/Lo)	m3/h	580/440/380	540/430/380	540/430/380	758/615/500	1000/800/630	1600/1440/1185	
Indoor noise level (Hi/Mi/Lo)	dB(A)	41/34/31.5	39.5/33/30.5	39.5/33/30.5	39.5/35.5/30.5	46/39.5/34.5	50/46/40.5	
Indoor unit	Dimension(W*D*H)	mm	805x194x285	805x194x285	805x194x285	957x213x302	1040x220x327	1259x282x362
	Packing (W*D*H)	mm	870x270x365	870x270x365	870x270x365	1035x295x385	1120x405x315	1340x450x385
	Net/Gross weight	Kg	8.7/10.8	8/10.2	8/10.2	11.0/13.8	13.6/17	19.5/25.1
	Model		YKT-32-6-229L	YKT-24-6-236L	YKT-24-6-236L	YKT-48-6-219-1	YKT-48-6-219-1	YKT-63-6-204L
Outdoor fan motor	Input	W	80.2	/	/	/	/	/
	Capacitor	uF	5	2	2	2.5	3.0	4
	Speed	r/min	850/730	800/650	800/650	880	830	780
	a.Number of rows		1	1	1	1.0	2	1.6
Outdoor coil	b.Tube pitch(a)x row pitch(b)	mm	19.5x11.6	19.5x11.6	19.5x11.6	19.5x11.6	19.5x11.6	19.5x11.6
	c.Fin spacing	mm	1.2	1.2	1.2	1.2	1.2	1.2
	d.Fin type (code)		Unhydrophilic aluminium	Unhydrophilic aluminium	Unhydrophilic aluminium	Unhydrophilic aluminium	Unhydrophilic aluminium	Hydrophilic aluminium
	e.Tube outside dia.and type	mm	Φ5,Inner groove tube	Φ5,Inner groove tube	Φ5,Inner groove tube	Φ5,Inner groove tube	Φ5,Inner groove tube	Φ5,Inner groove tube
	f.Coil length x height x width	mm	740x468x11.6	740x468x11.6	740x468x11.6	755*11.6*507.5	875x507x23.2	910*11.6*604.5+565*11.6*604.5
	g.Number of circuits		2	2	2	2	4	4
	Outdoor air flow	m3/h	2091	1800	1800	2100	2500	4200
Outdoor noise level	dB(A)	52.5	52	52	58.5	55.5	60.5	
Outdoor unit	Dimension(W*D*H)	mm	720x270x495	720x270x495	720x270x495	765x303x555	805x330x554	890x342x673
	Packing (W*D*H)	mm	835x300x540	835x300x540	835x300x540	887x337x610	915x370x615	995x398x740
	Net/Gross weight	Kg	25.4/27.3	24.3/26	24.3/26	32.6/34.9	37.7/40.4	49.3/52.4
Refrigerant type	Kg	R410A/0.5	R410A/0.48	R410A/0.48	R410A/0.65	R410A/1.05	R410A/1.3	
Design pressure	MPa	4.2/1.5	4.2/1.5	4.2/1.5	4.2/1.5	4.2/1.5	4.2/1.5	
Refrigerant piping	Liquid side/ Gas side	mm(inch)	6.35mm(1/4in)/12.7mm(1/2in)	6.35mm(1/4in)/9.52mm(3/8in)	6.35mm(1/4in)/9.52mm(3/8in)	6.35mm(1/4in)/12.7mm(1/2in)/9.52mm(3/8in)/15.9mm(5/8in)	6.35mm(1/4in)/12.7mm(1/2in)/9.52mm(3/8in)/15.9mm(5/8in)	9.52mm(3/8in)/15.9mm(5/8in)
	Max. refrigerant pipe length	m	20	20	20	25	25	25
	Max. difference in level	m	8	8	8	10	10	10
Connection wiring		14#x3//	1.5x3//	1.5x3//	1.5x3//	2.5x3//	1.0x4//	
Plug type		14x3/no-plug	16x3/SP008	16x3/SP008	14x3/no-plug	2.5x3/no-plug	no-plug	
Thermostat type		Remote Control	Remote Control	Remote Control	Remote Control	Remote Control	Remote Control	
Operation temperature	°C	17~30	17~30	17~30	17~30	17~30	17~30	
Room temperature	Indoor(cooling/heating)	°C	17~ 32//	17~ 32//	17~ 32//	17~ 32//	17~ 32//	17~ 32//
	Outdoor(cooling/heating)	°C	18~ 43//	18~ 43//	18~ 43//	18~ 43//	18~ 43//	18~ 43//
Application area (Cooling Standard)	m ²	15~ 21	16~ 23	16~ 23	24~ 35	32~ 47	40~ 59	
Qty'per 20' /40' /40'HQ		132/274/305	132/274/305	132/274/305	90/190/222	83/169/199	49/101/122	



tempblue™

HIWALL

J SERIES

FIXED SPEED

WWW.CEBRANDS.COM

CE LLC. | MIAMI, FL

REF 092023